

1998 Mooney M20R Ovation

Reg # N50EC

Serial # 29-0169

Price: \$309,000

Total Time: 710

Engine Time: 710; 310 STO

Contact:

William Byrd

NexGA Aircraft, Inc.

Office: (336) 665-0300

Cell: (919) 475-6488

william@nexga.com

NexGA Aircraft, Inc.

"Specializing in the Next Generation of General Aviation"

1060 PTI Drive * Greensboro, NC 27409 * (KGSO)

(866) 646-9819 * (336) 665-0300 * Fax: (336) 665-0333

www.nexga.com

William Byrd

Cell: (919) 475-6488

william@nexga.com

George Johnson

Cell: (336) 926-0829

george@nexga.com

Aircraft Details

Remarks:

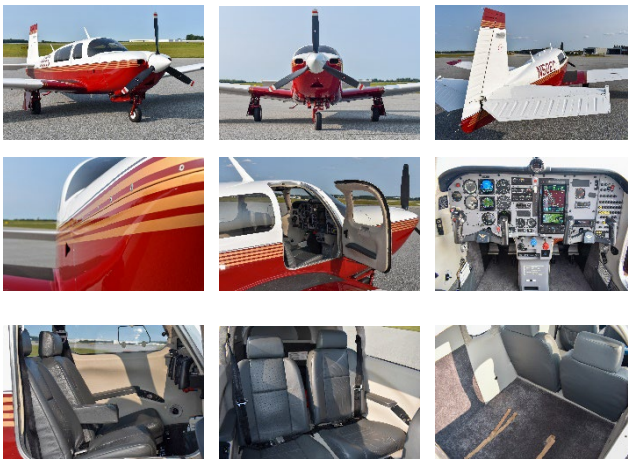
Fast and Sleek! This Pristine Cross Country Machine is the Perfect Business Tool or Addition to the Family. Low Time and Well Equipped with the Latest and Greatest from Garmin! Garmin 750Xi & 650Xi, Garmin GFC500 Digital Autopilot w/ Smart Glide, Dual Garmin GI275 Electronic Attitude Indicator & HSI w/ Moving Map, Garmin GTX345 ADS-B In & Out, Active Traffic, Speedbrakes, Stormscope, Engine Monitor, 406Mhz Digital ELT & Much More. Immaculate Condition Inside & Out. Compressions in the High 70's! Excellent Maintenance and Complete Logbooks. Call Today!

Avionics:

Garmin GTN 750Xi Touchscreen Flight Navigator/Nav/Comm/GPS
Garmin GTN 650Xi Touchscreen Flight Navigator/Nav/Comm/GPS
Garmin GFC 500 Digital Autopilot w/ Level Button & Smart Glide
Garmin GTX 345 ADSB In & Out Transponder w/ Traffic & Weather
Garmin GMA 35 Remote Audio Panel
Garmin GI 275 Electronic Attitude Indicator w/ Synthetic Vision
Garmin GI 275 Electronic HSI w/ Moving Map
JPI EDM 700 Graphic Engine Monitor
Shadin Digital Fuel Computer
BF Goodrich WX950 Stormscope
Ryan 9900 TCAD Active Traffic
Mooney Annunciator Panel
Aux Music Input

Equipment:

Built in 4 Place Oxygen
Precise Flight Speedbrakes
Mooney Sun Visors
Shoulder Harnesses
Electric Trim
Bose LEMO & Standard Headset Jacks
Panel Mounted USB Ports
Aircraft Components Gear Alert System
Standby Vacuum Pump
Aircraft Cover
Bruces Custom Plugs
Tow Bar



Interior: Gray Leather, Black Leather Wrapped Yoke

Exterior: Deep Red w/ Las Vegas Gold & Cumulus Gray

Total Time: 710 Since New

Engine Time: 710 Since New; 310 Since Top Overhaul

Prop Time: 710 Since New

Annual Due: February 2025

IFR Certification Due: February 2026

Useful Load: 1005 Lbs.

"SPECIFICATIONS SUBJECT TO VERIFICATION UPON INSPECTION"

"AIRCRAFT SUBJECT TO PRIOR SALE"