

# 2003 Columbia 300

Reg # N65099

Serial # 40075

Price: \$239,000 Includes 300 School

Total Time: 1050

Engine Time: 1050

Contact:

William Byrd

NexGA Aircraft, Inc.

Office: (336) 665-0300

Cell: (919) 475-6488

william@nexga.com

# NexGA Aircraft, Inc.

*"Specializing in the Next Generation of General Aviation"*

7680 Airline Rd \* Greensboro, NC 27409 \* (KGSO)

(866) 646-9819 \* (336) 665-0300 \* Fax: (336) 665-0333

www.nexga.com

William Byrd

Cell: (919) 475-6488

william@nexga.com

George Johnson

Cell: (336) 926-0829

george@nexga.com

## Aircraft Details

### Remarks:

Completely Turn Key and Ready for Action! Immaculate, Original Columbia 300! Always Hangered with No Damage History & In Beautiful Condition! Your Opportunity to Own a Piece of Columbia History, They Are Only Original Once! Premium IFR Package w/ WAAS Garmin GNS480 & Dual MX-20 Multi-Function Displays w/ Jepp Charts, Stormscope, Active Traffic, XM Weather & Terrain. S-Tec 55X Autopilot Upgraded with GPSS Steering, Altitude & VS preselect, Graphic Engine Monitor, HID Landing & Taxi Lights, Speedbrakes, Dual Vacuum Pumps & Standby Battery System. Fast & Sleek Cross Country Machine! Includes Columbia 300 School, Do Not Let This One Fly Away, Call Today to Schedule a Viewing.

### Avionics:

King KCS 55A Slaved HSI

King KI-256 AI w/ Flight Director

S-TEC 55 Autopilot w/ Alt Preselect & GPSS Steering

Garmin GNS 480 WAAS Nav/Com/GPS/Color Moving Map

Dual Garmin MX20 Color Multi-Function Displays w/ Traffic & Wx

Apollo/Garmin SL30 Nav/Comm

Apollo/Garmin SL15 Audio Panel

Apollo/Garmin SL70 Transponder

NavWorx 600B ADS-B In & Out

Garmin GDL 69 XM Weather

Ryan TCAD 9900BX 24nm Active Traffic

TAWS-B Terrain

JPI EDM 700 Graphic Engine Monitor w/ Lean Find

Shadin Digital Fuel Management

WX-500 Weather Detection System Stormscope

Alpine DVA-7996 AM/FM/CD/DVD Player w/ 7" Monitor

### Equipment:

Precise Flight 2000 Speed Brakes

Factory Tuned Induction and Exhaust

GAMI Tuned & Balanced Fuel Injectors

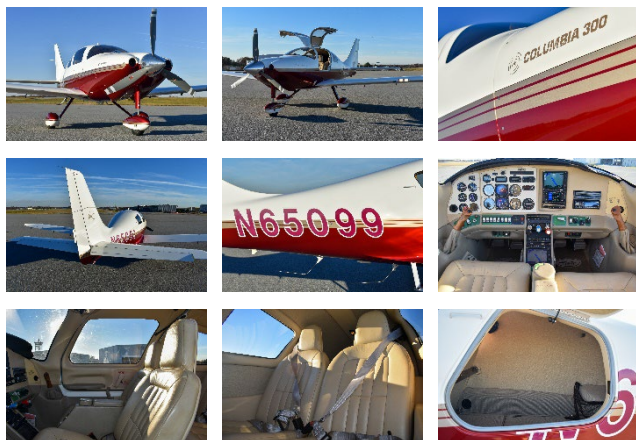
Dual Vacuum Pumps & Standby Battery System

Precise Flight Semi-Portable Oxygen System

Utility Category Airframe & Dual Carbon-Fiber Composite Spars

Dual Side-Stick Push Rod Controls & Rudder Limiter System

High Intensity Discharge (HID) Landing & Taxi Lights & Courtesy Lights



**Interior:** Tan Buckskin Leather

**Exterior:** Mojave Red w/ Royal Gold Stripe

**Total Time:** 1050 Since New

**Engine Time:** 1050 Since New

**Prop Time:** 1050 Since New

**Annual Due:** June 2025

**IFR Certification Due:** June 2026

**Useful Load:** 1006 Lbs.

**"SPECIFICATIONS SUBJECT TO VERIFICATION UPON INSPECTION"**

"AIRCRAFT SUBJECT TO PRIOR SALE"